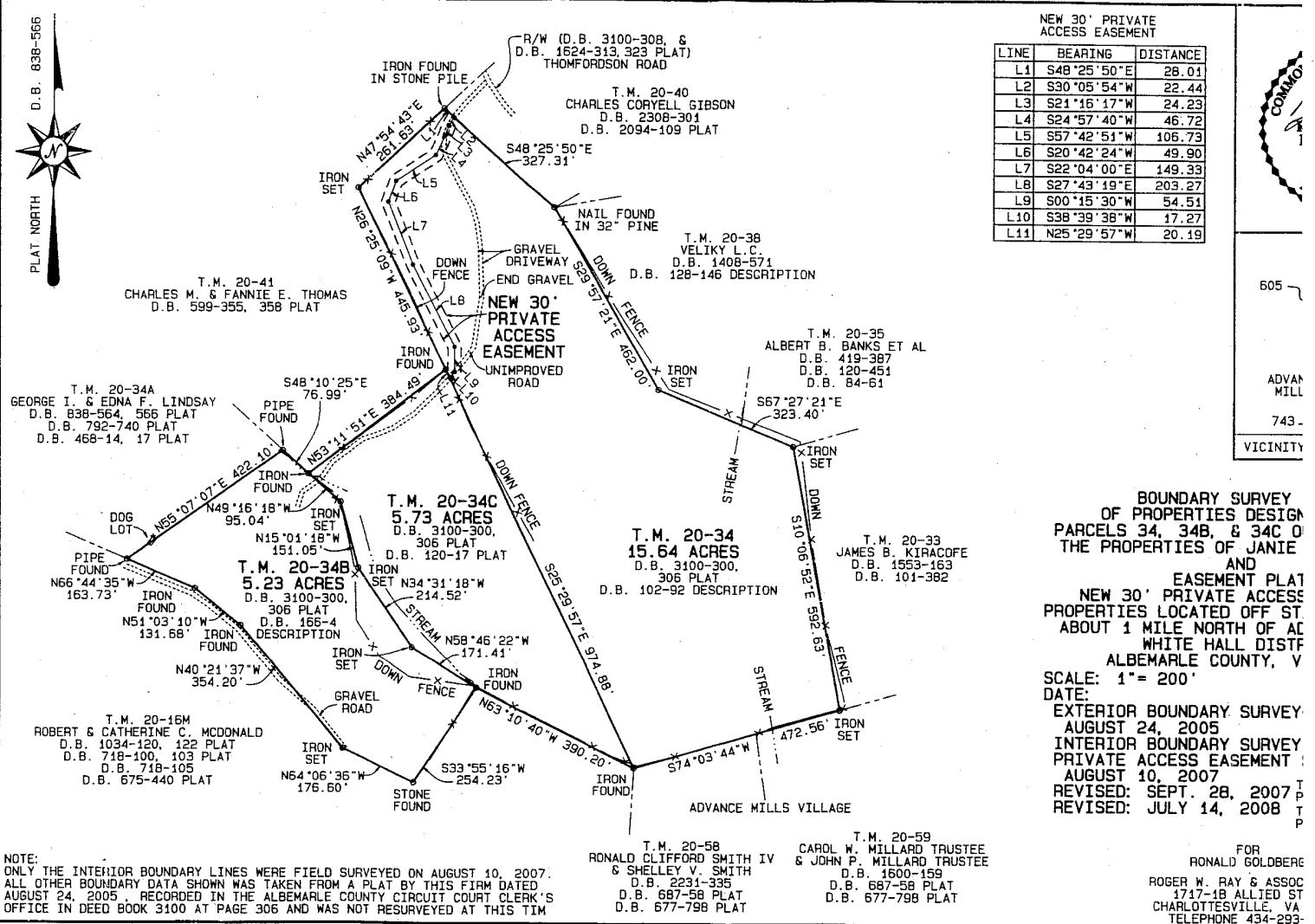
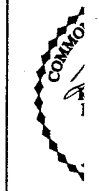


Deed Book 3627 P. 189



NEW 30' PRIVATE ACCESS EASEMENT

LINE	BEARING	DISTANCE
L1	S48°25'50"E	28.01
L2	S30°05'54"W	22.44
L3	S21°16'17"W	24.23
L4	S24°57'40"W	46.72
L5	S57°42'51"W	106.73
L6	S20°42'24"W	49.90
L7	S22°04'00"E	149.33
L8	S27°43'19"E	203.27
L9	S00°15'30"W	54.51
L10	S38°39'38"W	17.27
L11	N25°29'57"W	20.19



605
ADVAN
MILL
743-
VICINITY

BOUNDARY SURVEY
OF PROPERTIES DESIGN
PARCELS 34, 34B, & 34C OF
THE PROPERTIES OF JANIE
AND
EASEMENT PLAT
NEW 30' PRIVATE ACCESS
PROPERTIES LOCATED OFF ST.
ABOUT 1 MILE NORTH OF AL
WHITE HALL DISTF
ALBEMARLE COUNTY, V
SCALE: 1" = 200'
DATE:
EXTERIOR BOUNDARY SURVEY
AUGUST 24, 2005
INTERIOR BOUNDARY SURVEY
PRIVATE ACCESS EASEMENT
AUGUST 10, 2007
REVISED: SEPT. 28, 2007
REVISED: JULY 14, 2008

NOTE:
ONLY THE INTERIOR BOUNDARY LINES WERE FIELD SURVEYED ON AUGUST 10, 2007.
ALL OTHER BOUNDARY DATA SHOWN WAS TAKEN FROM A PLAT BY THIS FIRM DATED
AUGUST 24, 2005, RECORDED IN THE ALBEMARLE COUNTY CIRCUIT COURT CLERK'S
OFFICE IN DEED BOOK 3100 AT PAGE 306 AND WAS NOT RESURVEYED AT THIS TIME

T.M. 20-58 RONALD CLIFFORD SMITH IV & SHELLEY V. SMITH
D.B. 2231-335
D.B. 687-58 PLAT
D.B. 677-798 PLAT

T.M. 20-59 CAROL W. MILLARD TRUSTEE & JOHN P. MILLARD TRUSTEE
D.B. 1500-159
D.B. 687-58 PLAT
D.B. 677-798 PLAT

FOR
RONALD GOLDBERG
ROGER W. RAY & ASSOC
1717-18 ALLIED ST
CHARLOTTESVILLE, VA
TELEPHONE 434-293-