



This information is deemed accurate but not guaranteed.



RWR Farms & Estates
Brokers and Consultants
a division of
Roy Wheeler Realty Co.
Since 1927

Gerri Russell
434-531-9581 cell
gerrirussell.com
www.gerrirussell.com
Jim Bonner
434-981-4327 cell
jim@jimbonner.com
www.jimbonner.com



3715 Ashleigh Way Road



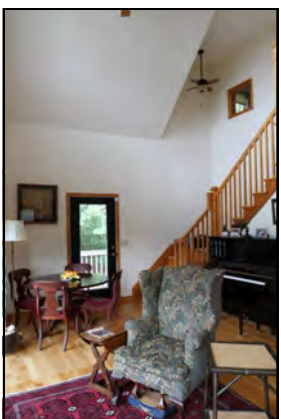
The centerpiece of this home is the massive bank of windows looking out on the farm



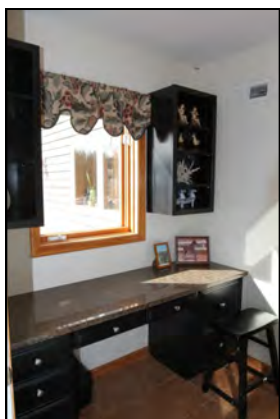
Combination Room- Open floor plan allowing views from multiple spaces on the main and upper level



Kitchen- Stainless steel appliances, granite counters, wood cabinets



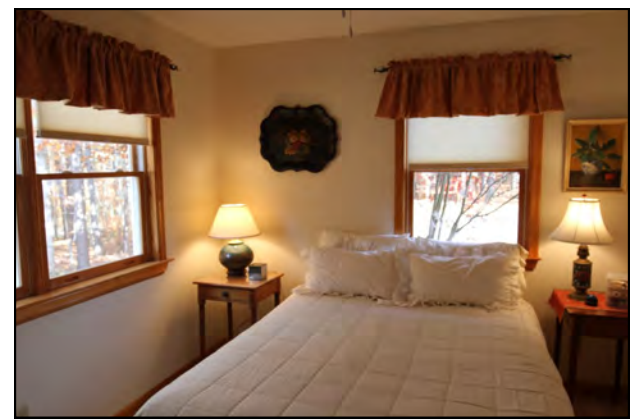
Foyer area



First floor bedroom



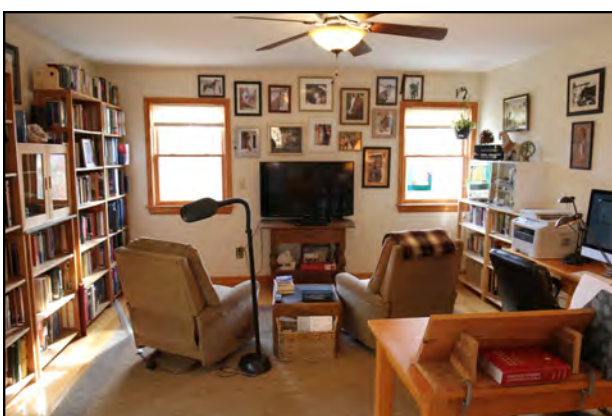
First floor full bath



First floor guest bedroom



Loft area



Large master bedroom- This large light filled bedroom is currently used as an office



Lower level family room



3715 Ashleigh Way Road
Barboursville, Virginia

Fabulous small farm of 7.79 acres, privately situated in northern Albemarle. Keep an eye on your beloved animals from the comfort of this stunning (3 bedroom/3 bath) home, looking out on the efficiently fenced pastures and barn with automatic waterers.

A two car garage, mower shed and sophisticated astronomic observatory are included (elements of the computerized telescope are negotiable).

Everything is in excellent and move in condition. MLS# 569576